

As a **nature reserve**, Sun Rising has a number of different **habitats**: newly planted trees, developing woodland, hedgerows, grassland, wildflower meadow, pond, stone tracks and rocky areas, woodpiles and bare soil.

Each habitat is managed for different **species** of plants, birds, small mammals, butterflies, moths, hoverflies, beetles, spiders and other invertebrates.



BIRDS

77 species of **bird** have been recorded here at Sun Rising.

WILDFLOWERS

Over 200 **wildflower** species have been found at Sun Rising. There are 37 species of grasses, sedges and rushes.



BUTTERFLIES

28 species of **butterfly** have been recorded, and almost 600 **moths**!

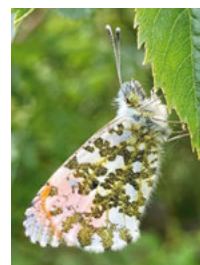
Scan here to see our full butterfly guide.



Sun Rising is a sixteen acre natural burial ground and nature reserve in rural South Warwickshire. Opened in 2006, it is carefully managed to ensure a perfect balance between wild nature and a place where families come to visit their loved ones' graves.

You are welcome to follow the Explorer Path on this leaflet, or walk elsewhere. Please do keep to the stone tracks and mown paths.

In order to protect nesting birds and mammals, Sun Rising is a **NO DOGS** nature reserve.



Throughout your journey, you will find benches on which to pause in the **peace and calm** of nature. Take your time...

CONTACT US

Tel : 01295 688488 Mobile : 07792 294414
Email : office@sunrising.co.uk
Website : sunrising.co.uk
Office (for correspondence only) :
Nature Reserve Burial Grounds Limited
8 Welchman Place, Middle Tysoe,
Warwickshire CV35 0SU
Company Number : 5111379









Explorer Map



Sun Rising Natural Burial Ground
and Nature Reserve

KEY:

-  Growing Woodland
-  Grassland that will become Woodland
-  Wildflower Meadow
-  Explorer Path
-  Habitat Interpretation Board (HIB)
-  Mown Path

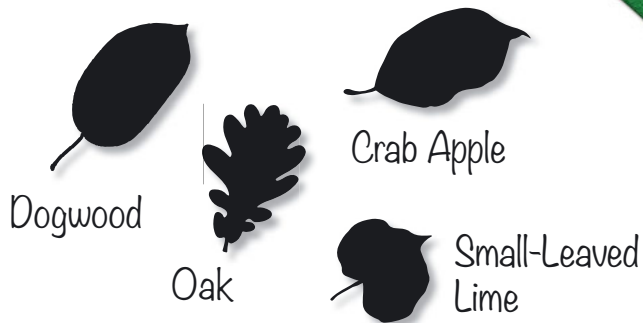
While this map is accurate (in 2023), as a **developing nature reserve**, the landscape is always changing. Areas of woodland will expand and grow. Paths and HIBs may move. Have fun exploring!

Butterfly Stones:

our wild rockery was specifically created for butterflies and other invertebrates. The wild strawberries, cinquefoil, trefoils and other plants happily scramble over the stones.



Pond: the pond is a favourite place for dragonflies, damselflies, bees and butterflies. The water is alive with newts, toads and other wildlife.



Tyr's Stone: installed to remember those who have died in the local stone quarries over the years. All the stone used in the tracks at Sun Rising came from these quarries just up the road.



Peter's Map: in front of the Longhouse, there is a 3D map which names the hills and towns around Sun Rising.



Guelder Rose

Hazel

Hawthorn

Wild Service

North Entrance

Cairn: this was built to remember those who died in 1642 at the first battle of the English Civil War, which took place a few miles away at Edge Hill. As a memorial, it acknowledges all who have been affected by conflicts, near and far, old and new.



Sun Rising's Trees: there are 34 species of trees and shrubs at Sun Rising. We've given you the leaf shape of 12 of them here. Scan the QR code to find our online tree guide.



The Roundhouse: our iconic Cotswold stone building.

South Entrance